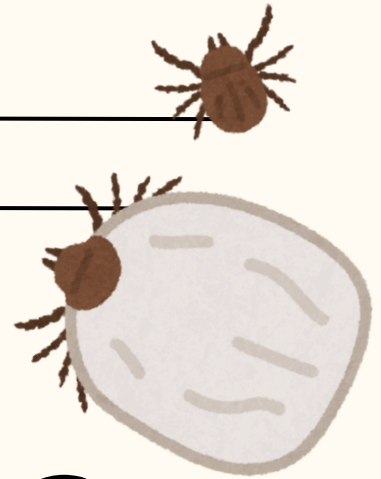


SALEM COUNTY

SCOOP

June 2025

Molly English D'Onofrio



GOT TICKS?

TICKS OF NJ

Species	Can Transmit
Asian Long-horned 	
Deer (Black-legged) 	
American Dog 	
Lone Star 	

Tick-Borne Diseases

Anaplasmosis
Babesiosis
Ehrlichiosis
Encephalitis
Lyme Disease
Red Meat Allergy
Relapsing Fever
Spotted Fever
Under Investigation

SEND US YOUR TICKS

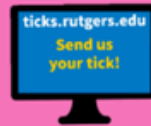
TAKE A TICK PIC



FILL OUT FORM



CHECK FOR TICK REQUEST



SEND TICK IN



CHECK RESULTS



TICK REMOVAL

1. Grasp the tick



2. Pull up



3. Wash your hands



4. Submit to NJ Ticks 4 Science!



@NJTICKS4SCIENCE

COMMON TICK MISCONCEPTIONS

Myth

Fact

✗ Ticks are Insects

✓ Ticks are Arachnids

✗ There is only one tick species in NJ

✓ There are 14 tick species in NJ

✗ Ticks are only active during warm months

✓ Ticks are active year-round

✗ Ticks immediately bite after getting on you

✓ Ticks may take hours to find a spot and bite

✗ All tick species transmit Lyme bacteria

✓ Only deer (blacklegged) ticks transmit Lyme bacteria

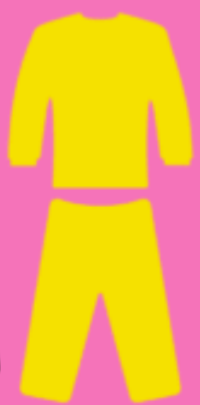
✗ An infected tick will always make you sick

✓ An infected tick doesn't always transmit



TICK BITE PREVENTION

Clothing



✓ Wear light colored clothing



✓ Wear long sleeves, pants and socks

Repellent

✓ Use a repellent that contains DEET, picaridin, oil of lemon eucalyptus, or IR3535



Tick Checks



✓ Check everywhere!

✓ Especially behind the ears, knees, around the ankles, groin, head, and belly button

Rutgers Tick Identification and Disease Testing

Rutgers University Center for Vector Biology offers services to identify ticks found in New Jersey by species and to test the tick for common diseases they carry.

In order to use this service:

- **Visit: <https://ticks.rutgers.edu/>**
- **Be sure to follow the instructions for taking a usable photo of the tick**
- **After you receive an identification of the tick, you can mail in the tick specimen for disease testing**
- **Explore the website for tips of preventing tick bites and removing ticks**

The current list of tick disease testing:

- **If the tick is a Blacklegged Tick, or Deer Tick, *Ixodes scapularis*, then we will test the tick for**
 - ***Borrelia burgdorferi*, Lyme bacterium**
 - ***Anaplasma phagocytophilum***
 - ***Babesia microti***
 - **Powassan virus**
- **If the tick is a Lone Star Tick, *Amblyomma americanum* then we will test for**
 - ***Ehrlichia chaffeensis***
 - ***Ehrlichia ewingii***
- **If the tick is a Gulf Coast Tick, *Amblyomma maculatum* we will test for**
 - ***Rickettsia parkeri***



Spotted Lanternfly in New Jersey

Some people may think it is a moth but it's really the Asian plant hopper known as the spotted lanternfly (SLF), *Lycorma delicatula* (White) and is a member of the order Hemiptera, family Fulgoridae. In the USA, spotted lanternfly is an invasive species that could be very devastating to some New Jersey crops and hardwood trees.

This insect was accidentally introduced into Pennsylvania and was confirmed in the state in September 2014. At first it was only found in Berks County, however, today it has spread throughout Pennsylvania and to neighboring states, including New Jersey.

New Jersey populations were first detected in 2018 and has been detected in every county since, although populations remain most troublesome in the counties bordering PA. In response, the NJ Department of Agriculture has issued an eight-county quarantine. People and businesses travelling in and out of these counties (Burlington, Camden, Gloucester, Hunterdon, Mercer, Salem, Somerset, and Warren) should inspect vehicles for hitchhiking SLF and inspect outdoor items such as packing bins, firewood, paving stones, lawn equipment, etc. for egg masses ([see checklist \(PDF\)](#)). Quarantine compliance will reduce the spread of SLF to new areas and counties thereby protecting New Jersey resources including forests and agriculture.

<https://njaes.rutgers.edu/spotted-lanternfly/faq.php>

Spotted Lanternfly Frequently Asked Questions
link above!

<https://njaes.rutgers.edu/spotted-lanternf>

Spotted Lanternfly Recommendations
link above!

<https://njaes.rutgers.edu/spotted-lanternfly/management.php>

Spotted Lanternfly Management
link above!

Home > COOPERATIVE EXTENSION

Volunteer With Us!



Did you know you can volunteer with Rutgers Cooperative Extension? Whether you are interested in youth development, horticulture, urban forestry, environmental protection, green infrastructure, marine ecology, food and nutrition, or food preservation, there is an opportunity for you in our Extension family.

Our volunteers are trained by experts at Rutgers and help extend the resources of the university into the communities we serve.

Why volunteer? To make a difference in your community, to connect with like-minded people, to help families, to help children, and to turn your passion into action! Thank you for volunteering with us, and helping to make New Jersey a great place to live and work.



Check out the link below for ways to get involved!

<https://saalem.njaes.rutgers.edu/2025/04/19/getting-involved-to-make-a-difference-for-the-environment/>

NJ 2025 Pesticide Container

Receive 1
CORE Point

Recycling Dates



RECYCLING STEP BY STEP

NOT ACCEPTABLE

1



TRIPLE RINSE



2



REMOVE BOOKLET



3



Image credit: @reallygreatsite



Dried residue in container



Dried residue on container

ACCEPTABLE



Clean container



Stained yet clean container

DROP OFF TIME 9 AM-12 PM AT EACH LOCATION

SALEM COUNTY
HELENA CHEMICAL
440 N. MAIN ST.,
WOODSTOWN, NJ
4/18/25
5/23/25
6/20/25

ATLANTIC COUNTY
HELENA CHEMICAL
66 ROUTE 206 (NORTH OF
THE ROUTE 30/206
INTERSECTION)
HAMMONTON, NJ
4/11/25
5/16/25
6/13/25

MONMOUTH COUNTY
RUTGERS FRUIT AND ORNAMENTAL
RESEARCH EXTENSION CENTER
283 ROUTE 539
CREAM RIDGE, NJ
4/25/25
5/30/25
6/27/25

REDUCE.
REUSE.
RECYCLE.

Notify Rachel DeFlumeri with the location, date, and time you will drop off if possible or to ask questions:
Rachel.DeFlumeri@ag.nj.gov

MORE INFORMATION ABOUT PESTICIDE CONTAINER RECYCLING

<https://www.nj.gov/agriculture/divisions/anr/nrc/processingsteps.html>





State of New Jersey

DEPARTMENT OF AGRICULTURE
PO Box 400
TRENTON NJ 08625-0330

EDWARD D. WENGRY
Secretary

PHILIP D. MURPHY
Governor
TAHESHA L. WAY
Lt. Governor

March 25, 2025

Dear Backyard Flock Poultry Owner:

On February 21, 2025, the New Jersey Department of Agriculture (NJDA) reported its first case of Highly Pathogenic Avian Influenza (HPAI) in domestic poultry since 2023. Since then, there have been five additional detections of the disease in domestic poultry throughout the state. Of these six cases, four were in live bird markets in Union, Hudson, and Mercer Counties. The remaining two cases were in backyard flocks, one in Salem County and one in Atlantic County. The HPAI virus has been found in wild birds within New Jersey, particularly since the end of December 2024. According to the New Jersey Department of Environmental Protection (NJDEP), suspect and confirmed avian influenza infections have caused localized deaths of multiple wild birds this winter, with reports of sick and dying wild birds continuing into the present.

HPAI is highly contagious and often fatal in domestic poultry species. Signs of HPAI in poultry can include:

- Sudden death
- Decrease in feed or water consumption
- Respiratory signs such as coughing, sneezing, nasal discharge
- Swelling around the eyes
- Open-mouth breathing
- Darkening of the comb/wattles
- Reddening of the shanks or feet
- Decreased egg production
- Lethargy

As HPAI continues to spread across the United States, poultry owners are urged to review their biosecurity practices and remain on alert for clinical signs of HPAI in their flock. Multi-species operations, particularly those with both poultry and ruminants on-site, are encouraged to mitigate areas in which the spread of disease between species may be at risk.

Online resources, such as [Secure Milk Supply- Biosecurity](https://securemilksupply.org/milk-producers/biosecurity/) - <https://securemilksupply.org/milk-producers/biosecurity/>, [CFSPH - Biosecurity](https://www.cfsph.iastate.edu/biosecurity/) - <https://www.cfsph.iastate.edu/biosecurity/> and [USDA Defend the Flock](https://www.aphis.usda.gov/livestock-poultry-disease/avian/defend-the-flock) - <https://www.aphis.usda.gov/livestock-poultry-disease/avian/defend-the-flock> can be utilized to tailor a farm-specific biosecurity plan. It is recommended that producers focus on-farm biosecurity practices to prevent wild bird contact with their poultry and livestock. USDA Wildlife Services (908-735-5654) can assist with wild bird mitigation plans on agricultural premises.

HPAI spreads through contact with bodily secretions, including feces, ocular, nasal, or oral secretions from infected birds. The virus can spread on vehicles, equipment, shoes, etc. Biosecurity is particularly important for those residents of New Jersey who keep backyard poultry flocks, which are typically smaller flocks and can include mixed bird types. Backyard flocks often have constant or frequent access to the outdoor environment by nature of

their housing style, which increases the likelihood of direct encounters with wild birds or their feces. Wild birds can enter backyard flock enclosures, increasing risk of direct contact. Potential exposure to wild birds via sharing waterers, feeders, or swimming areas is another source of disease risk to domestic poultry. Practicing good biosecurity can help prevent the spread of HPAI onto a farm.

Those biosecurity practices include:

- Eliminating exposure of domestic birds to wild birds. Minimizing standing water and extra feed in the environment that might attract wild birds.
- Avoiding contact with other poultry.
- Keeping a specific set of shoes and clothing for tending to poultry. Disposable boot covers or a foot bath that is changed regularly are other measures that can be used.
- Minimizing the number of people who visit the birds.
- Avoiding sharing equipment with other flocks and using appropriate disinfectants for equipment that must come onto a farm.

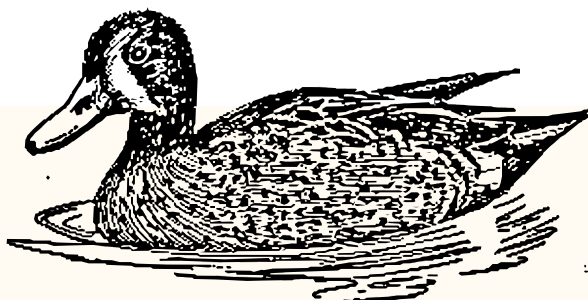
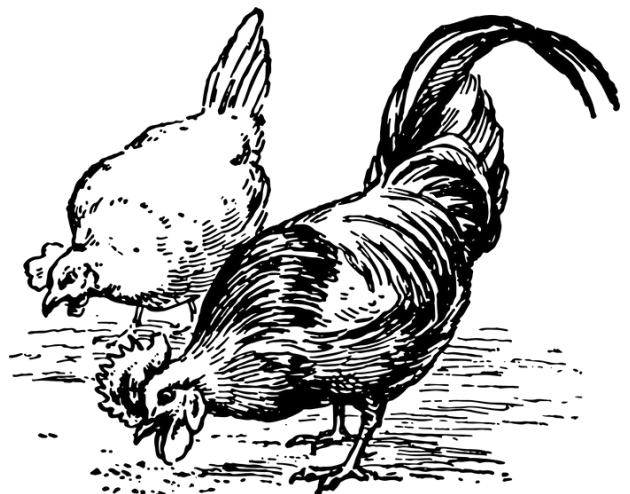
According to the New Jersey Department of Health (NJDOH), it is advised that individuals use personal protective equipment (PPE) when in contact with sick or dead birds. PPE is available at each county's Rutgers Cooperative Extension Office. The county office contact information can be found at <https://njaes.rutgers.edu/county/>. The NJDA continues to work closely with the NJDOH, NJDEP, and other state and federal partners to monitor the current H5N1 situation and coordinate disease control and elimination measures.

HPAI is a reportable disease. If you suspect HPAI in your poultry, please alert the New Jersey Department of Agriculture, Division of Animal Health at 609-671-6400.

Sincerely,



Amar Patil DVM, MVSc, PhD, Diplomate ACVM
State Veterinarian / Director, New Jersey Department of Agriculture Division of Animal Health
P.O. Box 330 Trenton, NJ 08625-0330, Phone: (609) 671-64000



2025/2026 New Jersey Commercial Tree Fruit Production Guide



- Preface and Table of Contents (3MB PDF)
- 1. Pesticide Safety (5MB PDF)
- 2. Pesticide Calibration and Stability (4MB PDF)
- 3. Orchard Nutrition (4MB PDF)
- 4. Orchard Frost Protection (4MB PDF)
- 5. Orchard Weed Control (4MB PDF)
- 6. Tree Fruit Diseases, Pests, and Controls (4MB PDF)
- 7. Peaches and Nectarines (4MB PDF)
- 8. Cherries (4MB PDF)
- 9. Plums (4MB PDF)
- 10. Apples (5MB PDF)
- 11. Pears (4MB PDF)
- 12. Additional Resources (3MB PDF)

The full PDF can be downloaded or viewed from the link below!

<https://njaes.rutgers.edu/pubs/publication.php?pid=e002>

Pesticide License Exams



**Virtual testing available.
Sign up, exam schedule and more
information available at**

<https://pacer.rutgers.edu/>

Click the link above!

Pesticide Manuals are also available for purchase in the
extension office or online!



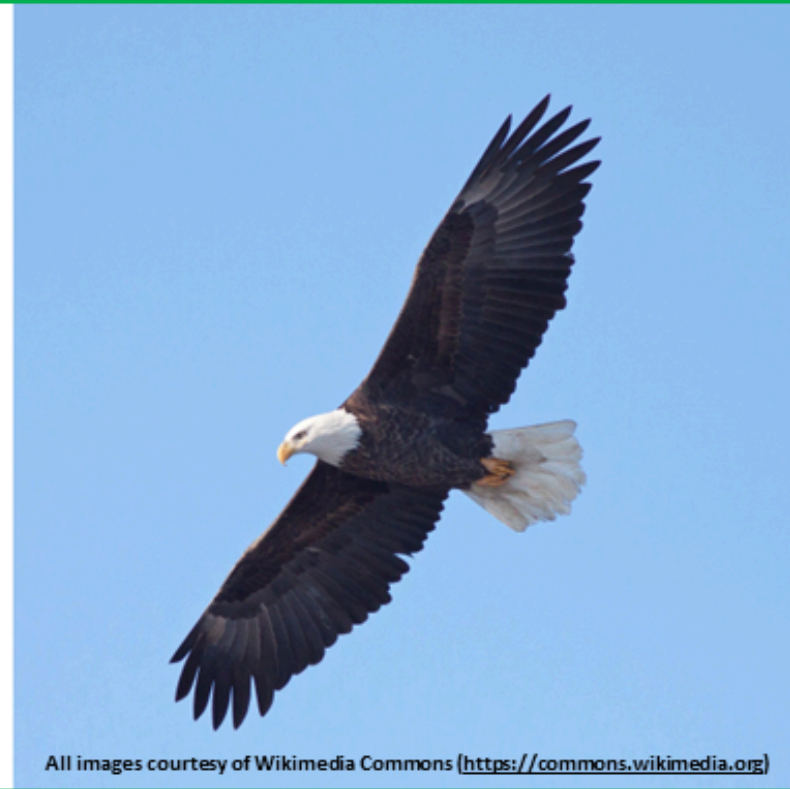
FOLLOW US ON FACEBOOK!

**SALEM COUNTY AGRICULTURAL EXTENSION
OFFICE**

[https://www.facebook.com/profile.php?
id=61566167394480](https://www.facebook.com/profile.php?id=61566167394480)



Some Good News: Environmental Success Stories in New Jersey



All images courtesy of Wikimedia Commons (<https://commons.wikimedia.org>)

This spring, we highlight impactful programs that made a difference in protecting the Garden State. From shellfish habitat restoration to plastic reduction, these projects showcase the creativity, collaboration, and dedication of individuals, organizations, and communities working towards a greener future. Join us as we explore the stories behind these successes, learn about the challenges overcome, and discover how these initiatives can serve as models for environmental progress in New Jersey and beyond.

April 14 – Forestry Success in the Pinelands.
Benjamin Pisano & Dylan Wiget, NJ Forest Service

April 21 – Plastic Reductions in NJ.
N. Dini Checko, Association of NJ Environmental Commissions

April 28 – Ocean Observation on the Jersey Shore.
Dr. Travis Miles, Rutgers University

May 5 – Wildlife Recovery in NJ.
Kathleen Kerwin, Wildlife Biologist

May 12 – Dam Removal/Restoration.
Carl Alderson, NOAA

May 19 – Shellfish & Marine Habitat Restoration.
Dr. Christine Thompson, Stockton University &
Capt. Alek Modjeski, American Littoral Society

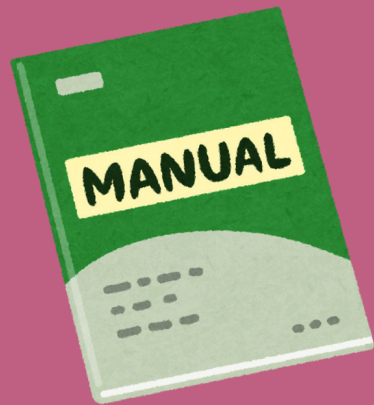
All webinars start at 6:30pm



To register for this webinar series, please visit:

<https://go.rutgers.edu/somegoodnews>

This webinar series is a collaboration between two Extension programs: Earth Day, Every Day (E2D2) and the Marine Extension Program Seminar Series (MEPSS). If you want to learn more about E2D2 or MEPSS please visit <https://envirostewards.rutgers.edu/earth-day-every-day/> or <https://ocean.niaes.rutgers.edu/marine/marine-extension-program-seminar-series/>.



Have Ag-Related Questions?

Need a Pesticide Manual?

Updated Agriculture Truck

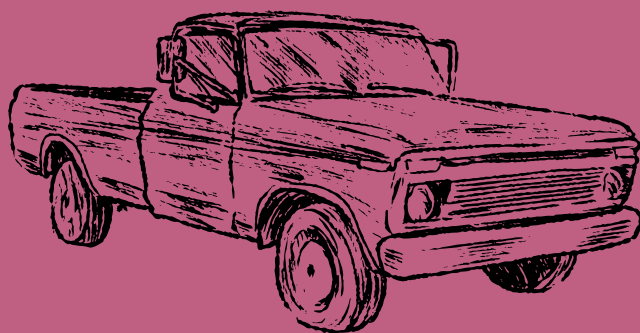
Certificate?

Soil Sample Kit?

Need advice from our Ag Agent?

Give the office a call!

856-769-0090





RUTGERS UNIVERSITY

Agriculture and Natural Resources

New Jersey Agricultural Experiment Station



HAVE YOU SIGNED UP FOR **PLANT & PEST ADVISORY** UPDATES YET?



[HTTPS://PLANT-PEST-ADVISORY.RUTGERS.EDU/](https://plant-pest-advisory.rutgers.edu/)

Cooperating Agencies: Rutgers, The State University of New Jersey, U.S. Department of Agriculture, and Boards of County Commissioners. Rutgers Cooperative Extension, a unit of the Rutgers New Jersey Agricultural Experiment Station, is an equal opportunity program provider and employer.



Online version >



New Jersey Agricultural
Experiment Station

Beta-version 2023

Experiment Station

Contact: twaller@njaes.rutgers.edu

Nursery & Landscape Pest Scouting Scouting with growing degree-days



Rutgers Green Industry Working Group

Contact: Timothy Waller, Ph.D.

twaller@njaes.rutgers.edu

WE **R** HERE WHEN YOU NEED US



Cooperating Agencies: Rutgers, The State University of New Jersey, U.S. Department of Agriculture, and County Boards of County Commissioners. Rutgers Cooperative Extension, a unit of the Rutgers New Jersey Agricultural Experiment Station, is an equal opportunity program provider and employer.



The Plant and Pest Advisory is put together by Rutgers Cooperative Extension referenced above is a treasure trove of information for all growers in the area from nursery, landscape & turf, vegetable, fruit, ornamentals, Christmas trees to field, forage & livestock. The Plant and Pest Advisory provides seasonal updates on disease, insects and weeds of importance to NJ growers.

Check out the link below and see what this website has to offer you!

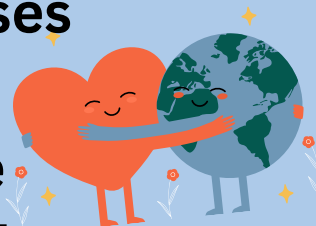
<https://plant-pest-advisory.rutgers.edu/>



Some Good News: Environmental Success Stories **in New Jersey**

2025 is the 5 year anniversary of the Earth Day, Every Day webinar series! This spring we highlighted impactful programs that made a difference in protecting the Garden State. From shellfish habitat restoration to plastic reduction, these projects showcased the creativity, collaboration, and dedication of individuals, organizations, and communities working towards a greener future. Explore the stories behind these successes, learn about the challenges overcome, and discover how these initiatives can serve as models for environmental progress in New Jersey and beyond. This webinar series is conducted in collaboration with the <https://ocean.njaes.rutgers.edu/marine/marine-extension-program-seminar-series/>

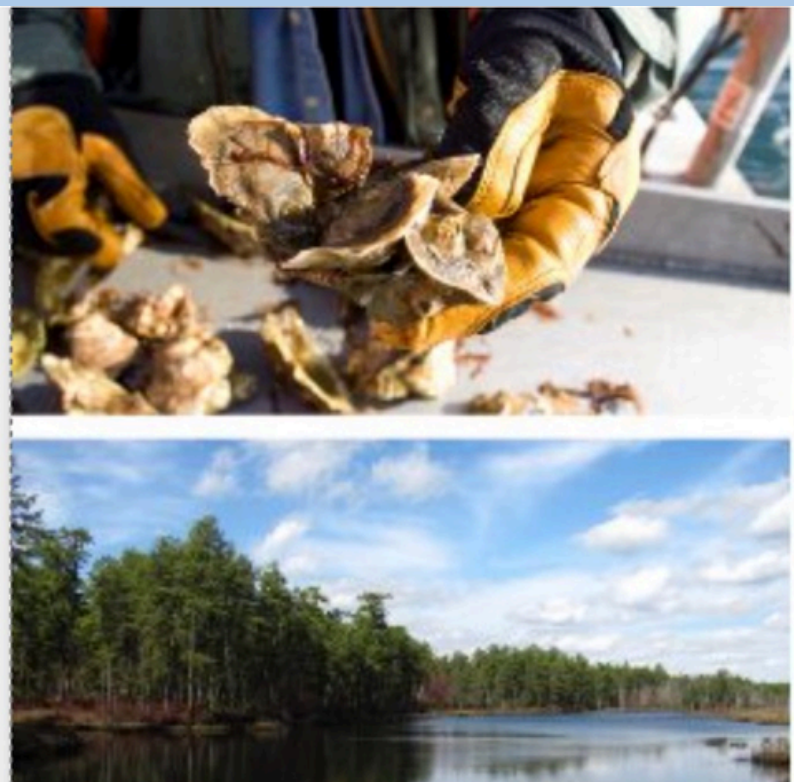
Our Earth Day, Every Day webinar series focuses on steps everyone can take to protect the environment. We can all do our part to take actions that make our homes more sustainable, from environmentally-friendly lawn care, to recycling, to conducting a home energy audit. These actions, more than ever, start at home.



Earth Day, Every Day Webinar Series – Environmental Stewards



The link above will bring you to the webinar series of Earth Day, Every Day. We hope you enjoy!



All images courtesy of Wikimedia Commons (<https://commons.wikimedia.org>)

FARM SAFETY



IFA



FBD
INSURANCE

[https://salem.njaes.rutgers.edu/2025/05/01/farm-safety-info-](https://salem.njaes.rutgers.edu/2025/05/01/farm-safety-info-graphic/)

[graphic/](https://salem.njaes.rutgers.edu/2025/05/01/farm-safety-info-graphic/)

53%

Tractors account for 53% of vehicle related deaths



graphic/

TRACTORS AND VEHICLES

- Watch out for other people and keep your speed down.
- Practice the SAFE STOP procedure: reverse park, handbrake on, controls in neutral, lower attachments, engine off and remove keys
- All tractor and machinery drivers should be competent.

29%

Attacks by cows with calves accounted for 29% of fatalities caused by livestock



LIVESTOCK

- Good handling facilities are essential when handling cattle and other livestock.
- All bulls are potentially dangerous. Always, fit a ring and chain to a stock bull when it is out in the field and exercise great caution if you need to enter the field with the bull.
- Never turn your back on the cow at calving time, always use a calving gate, never get in between the cow and her calf and always have an escape route.

60%

60% of quad bike accidents involve people over 60 years of age. Quad bikes make up 12% of vehicle related deaths



QUAD BIKES

- The new Quad Bike (ATV) Regulations require that all operators of Quad Bikes to completed a Quad Bike Training Course provided by a registered training provider to a QQI Standard or equivalent, and additionally all such operators must wear appropriate head protection while operating a Quad Bike. The Regulations come into force in November 2023.

85%

85% of child fatalities involve vehicles and machinery



CHILDREN

- Children should not be allowed unsupervised access to the farmyard.
- Keep children away from dangerous areas (slurry pits, silage pits, grain /chemical stores, working machinery and high areas).
- Under no circumstances should a child under 7 years of age be carried inside the cab of a tractor.

* All the statistics used in this leaflet were sourced from the HSA's *Statistics on Work-Related Fatalities in Agriculture in Ireland 2013-2022*.

FARM FAMILY CPD.IE

- The Farm Family CPD project works in partnership with farm families to promote a new cost effective and sustainable training-led approach to foster farm health, safety and wellbeing within each generation of the farm family unit.

- Training will be free of charge thanks to funding from DAFF under the EIP initiative. To register your interest and stay informed visit www.farmfamilycpd.ie.
- Training will not only be for farmers but also for younger and older family members.

- Farm Family CPD is supported by FRS Training, IFA, HSA, Teagasc, FBD and FRS Network.


FarmFamilyCPD.ie
continuous professional development - online farm safety training